



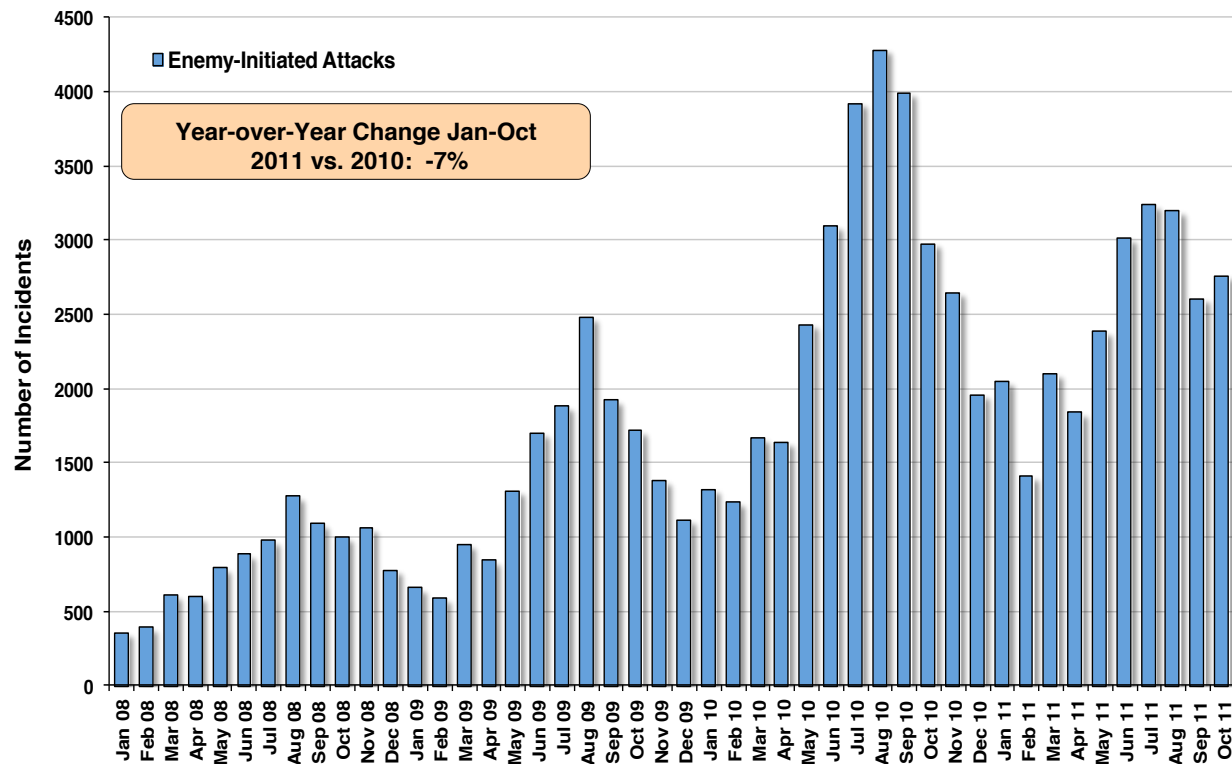
ISAF Monthly Data

Trends through October 2011





Enemy-Initiated Attacks (EIA) Nationwide Monthly Attacks



ISAF Observations

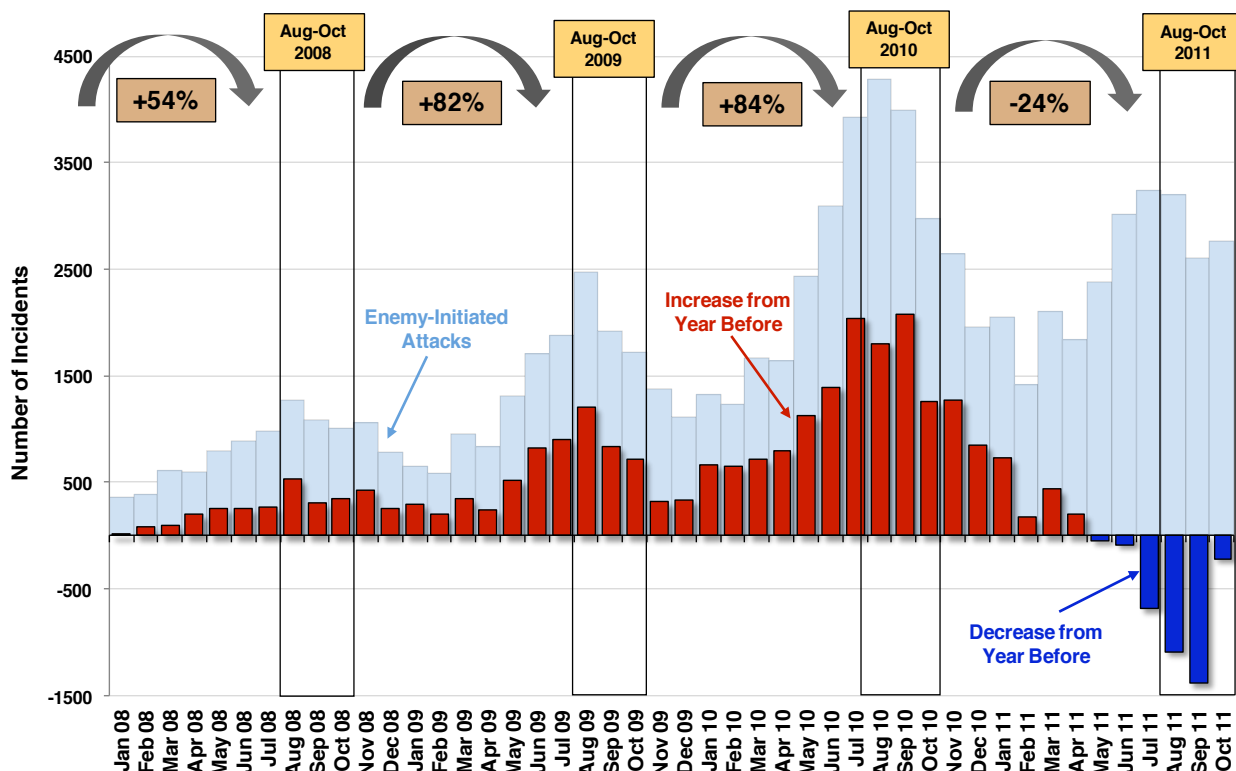
- ANSF / ISAF and SOF operations continue to interdict enemy capability in main effort areas.
- EIA in the period January – October 2011 are 7 percent lower compared to the same period in 2010.

Definition: Enemy-initiated attacks comprise enemy action (enemy-initiated direct fire, indirect fire, surface-to-air fire) and explosive hazard events, to include executed attacks only (improvised explosive device (IED) explosions / mine strikes).

Data Source: Afghan Mission Network (AMN) Combined Information Data Network Exchange (CIDNE) Database, as of 15 Nov 2011.

Enemy-Initiated Attacks

Nationwide Monthly Year-Over-Year Change



ISAF Observations

- In contrast to the large year-over-year increases before 2011, enemy-initiated attacks over the last 3 months are 24 percent lower compared to the same period in 2010.
- Each of the past 6 months had fewer enemy-initiated attacks than the corresponding months in 2010.
- This is the most sustained downward trend in enemy-initiated attacks recorded by ISAF.

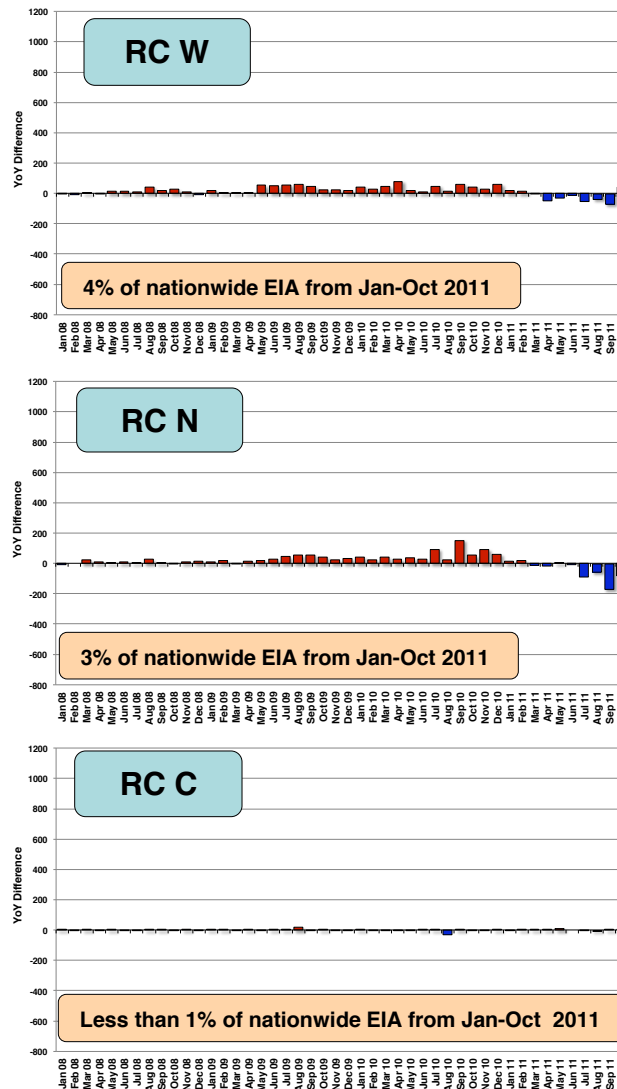
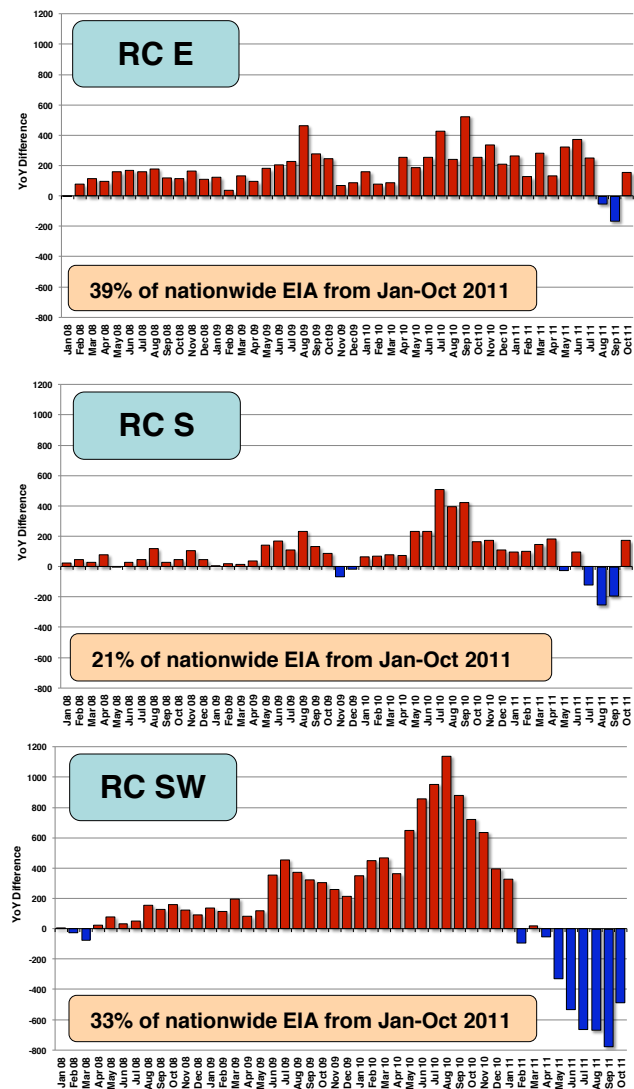
Definition: This chart shows the year-over-year **change** in enemy-initiated attacks (EIA). The total number of EIAs is shown in the background (light blue). The red bars represent an increase of monthly enemy-initiated attacks **compared to the same month the year before**; blue bars represent a decrease. The changes over three month periods are depicted at the top of the chart.

Data Source: Afghan Mission Network (AMN) Combined Information Data Network Exchange (CIDNE) Database, as of 15 Nov 2011.



Enemy-Initiated Attacks (EIA)

Monthly Year-Over-Year Change by RC (Jan 08 – Oct 11)



ISAF Observations

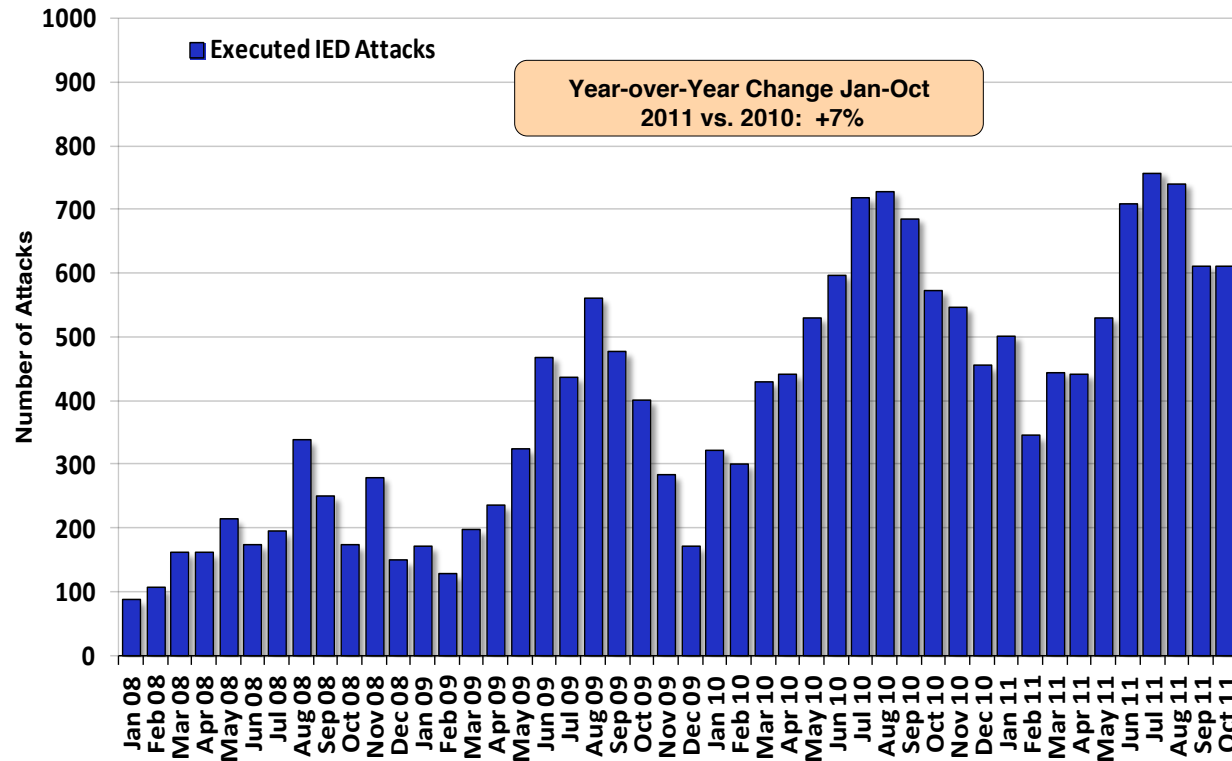
- In RC Southwest, EIA from January – October 2011 are 29 percent lower compared to the same period in 2010.
- In RC South, EIA slightly increased by 4 percent from January – October 2011 compared to the same period in 2010.
- RC East, the largest and most populated region in Afghanistan, remains the most contested region in the country with a 21 percent increase in EIA from January – October 2011 compared to the same period in 2010.
- ISAF will continue to take the initiative by conducting operations against the enemy this winter.

These comparative charts are plotted on the same scale to show the varying levels of enemy-initiated attacks between ISAF Regional Commands (RCs).
Data Source: Afghan Mission Network (AMN) Combined Information Data Network Exchange (CIDNE) Database, as of 15 Nov 2011.

DISCLAIMER: Figures may change as more information becomes available.

Executed IED Attacks

Nationwide Monthly Year-Over-Year Change



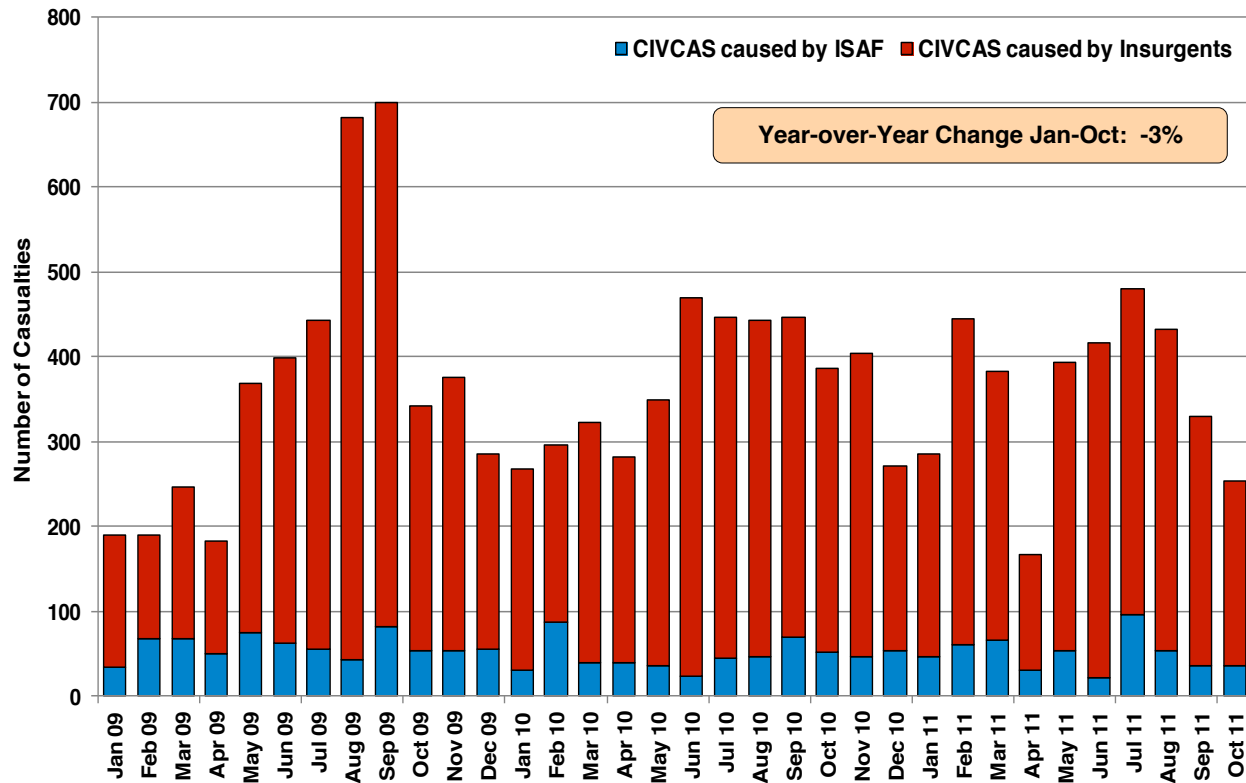
ISAF Observations

- IED explosions for the period January – October 2011 are 7 percent higher compared to the same period in 2010.
- Over 60 percent of Insurgents caused confirmed civilian casualties result from indiscriminate insurgent IED explosions.
- Insurgents continue to rely on IEDs as the principal means to execute their campaign.
- The number of IEDs found and cleared remains high.

Definition: Executed Improvised Explosive Device (IED) attacks comprise explosive hazard events, to include IED explosions and mine strikes.

Data Source: Afghan Mission Network (AMN) Combined Information Data Network Exchange (CIDNE) Database, as of 15 Nov 2011.

Monthly Civilian Casualties With Assigned Culpability



ISAF Observations

- Insurgents caused over 85 percent of civilian casualties in 2011.
- ISAF-caused civilian casualties for the period January-October 2011 are approximately unchanged from the comparable 2010 period, despite a substantial increase in the number of troops and activities.
- ISAF continues to make every effort to protect the Afghan population and ensure that the number of civilian casualties is kept to an absolute minimum.

Definition: The figures reported in this chart reflect incidents of conflict-related civilian casualties (deaths and wounded) that have been confirmed through investigation to have been caused by either ISAF or insurgents. The data reported here is consistent with ISAF policy, which directs that all credible allegations of civilian casualties be reviewed.

Data Source: ISAF Civilian Casualties (CIVCAS) Database, as of 11 Nov 2011.