

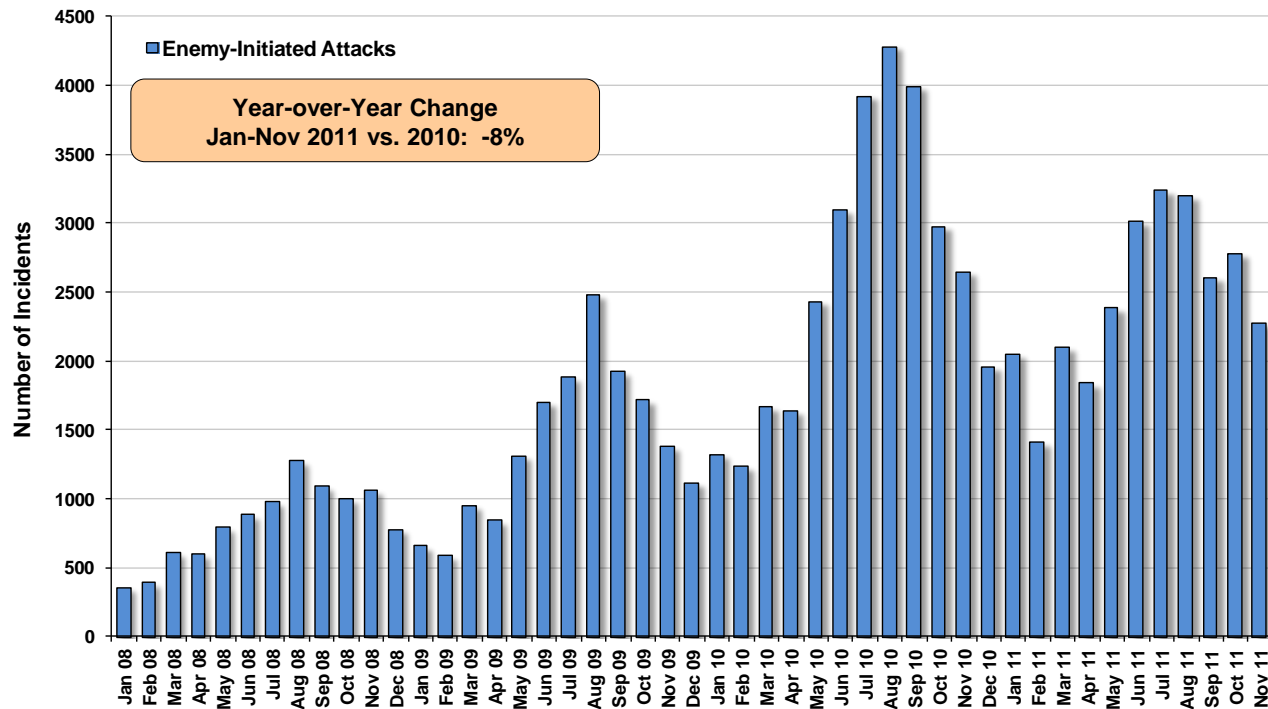


ISAF Monthly Data

Trends through November 2011



Enemy-Initiated Attacks (EIA) Nationwide Monthly Attacks



ISAF Observations

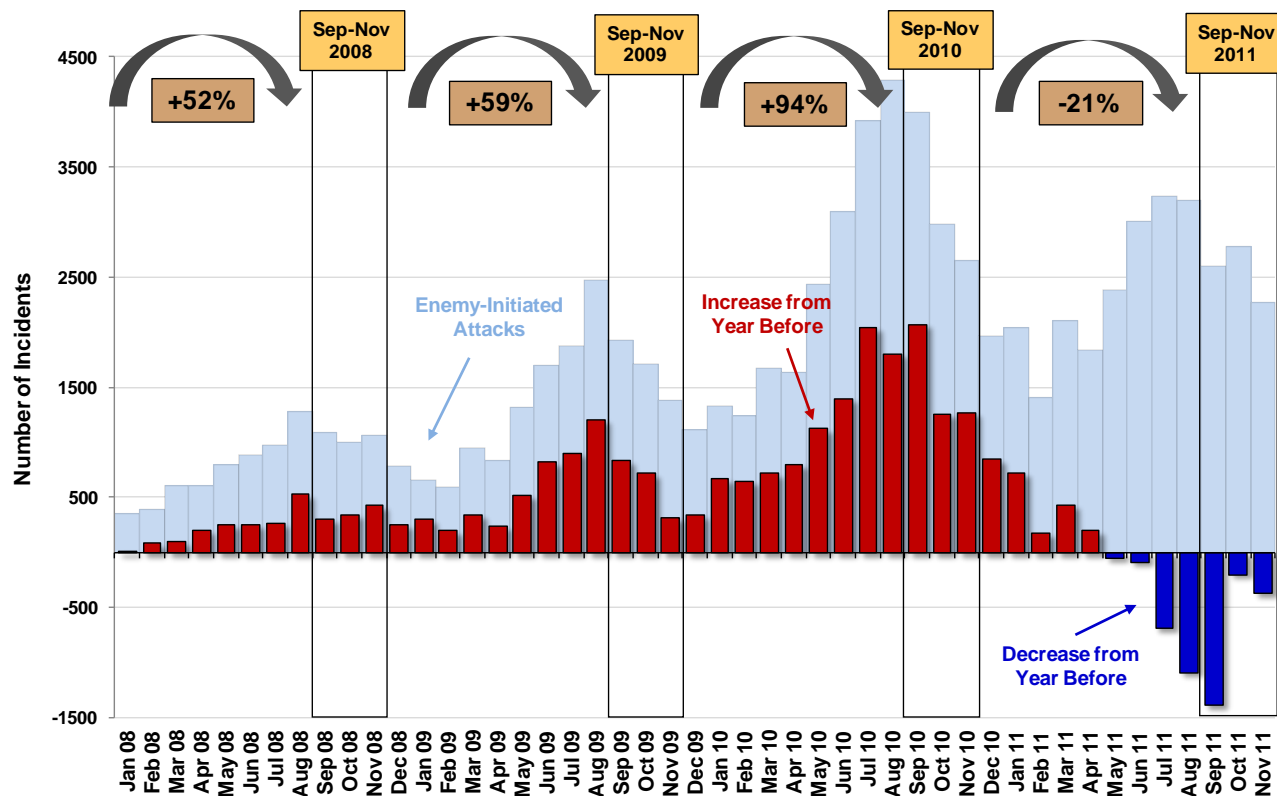
- ANSF / ISAF and SOF operations continue to interdict enemy capability in main effort areas.
- Enemy-initiated attacks continue to decline in accordance with annual seasonal patterns.
- Nationwide, enemy-initiated attacks in the period January – November 2011 are 8 percent lower compared to the same period in 2010.

Definition: Enemy-initiated attacks comprise enemy action (enemy-initiated direct fire, indirect fire, surface-to-air fire) and explosive hazard events, to include executed attacks only (improvised explosive device (IED) explosions / mine strikes).

Data Source: Afghan Mission Network (AMN) Combined Information Data Network Exchange (CIDNE) Database, as of 16 Dec 2011.

Enemy-Initiated Attacks

Nationwide Monthly Year-Over-Year Change



ISAF Observations

- In contrast to the large year-over-year increases before 2011, enemy-initiated attacks over the last 3 months are 21 percent lower compared to the same period in 2010.
- Each month since May 2011 had fewer enemy-initiated attacks than the corresponding month in 2010.
- This is the longest sustained downward trend in enemy-initiated attacks recorded by ISAF.

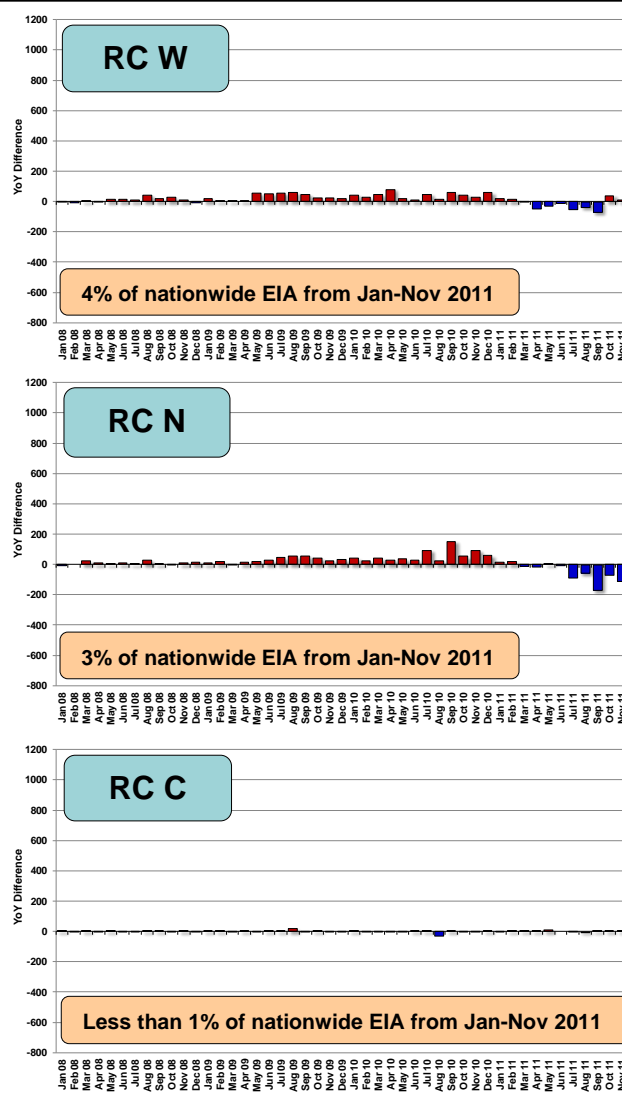
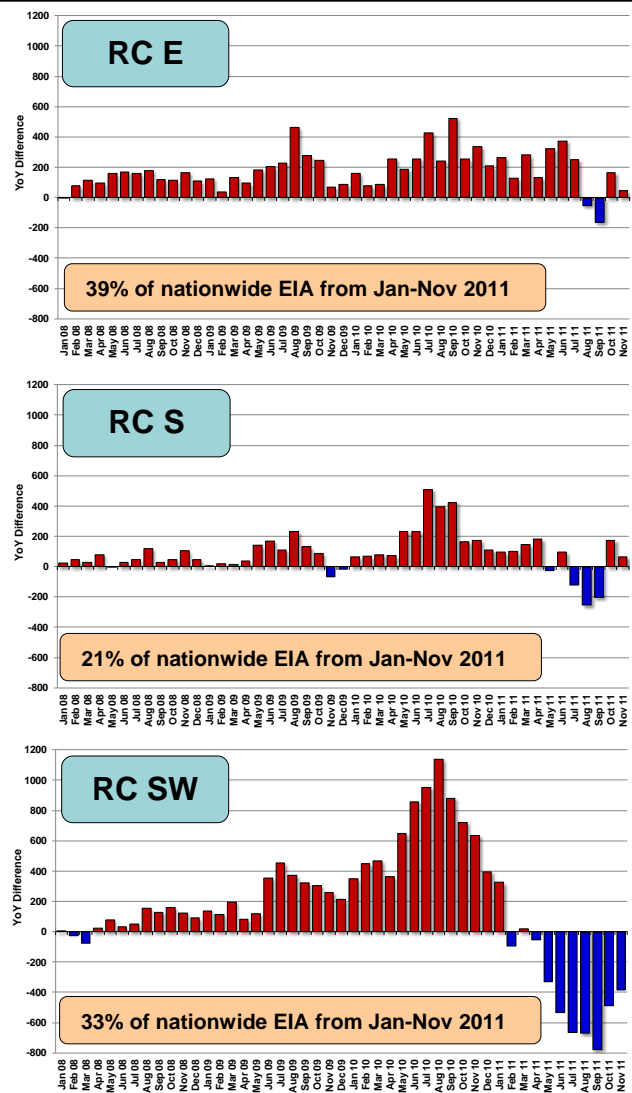
Definition: This chart shows the year-over-year **change** in enemy-initiated attacks (EIA). The total number of EIAs is shown in the background (light blue). The red bars represent an increase of monthly enemy-initiated attacks **compared to the same month the year before**; blue bars represent a decrease. The changes over three month periods are depicted at the top of the chart.

Data Source: Afghan Mission Network (AMN) Combined Information Data Network Exchange (CIDNE) Database, as of 16 Dec 2011.



Enemy-Initiated Attacks (EIA)

Monthly Year-Over-Year Change by RC (Jan 08 – Nov 11)



ISAF Observations

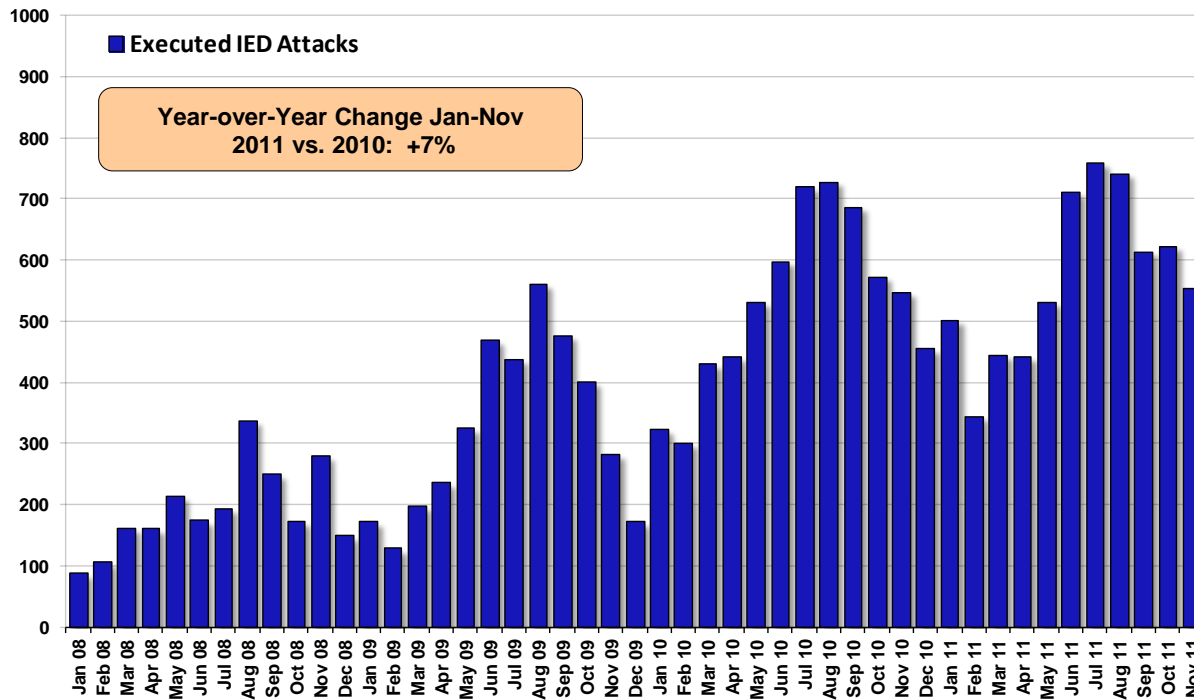
- In RC Southwest, EIA from January – November 2011 are 29 percent lower compared to the same period in 2010.
- RC North has seen a decrease in EIA for six consecutive months compared to the same months last year.
- In RC South, EIA increased by 5 percent from January – November 2011 compared to the same period in 2010.
- RC South EIA from July-September 2011 were lower than the same period last year due to Operation Hamkari which took place in that area in 2010 and raised EIA.
- RC East, the most populated region in Afghanistan, remains the most contested region in the country with a 20 percent increase in EIA from January – November 2011 compared to the same period in 2010.
- ISAF/ANSF will continue to take the initiative by conducting operations against the enemy this winter.

These comparative charts are plotted using the same scale to show the varying levels of enemy-initiated attacks between ISAF Regional Commands (RCs).
Data Source: Afghan Mission Network (AMN) Combined Information Data Network Exchange (CIDNE) Database, as of 16 Dec 2011.



Executed IED Attacks

Nationwide Monthly Year-Over-Year Change



ISAF Observations

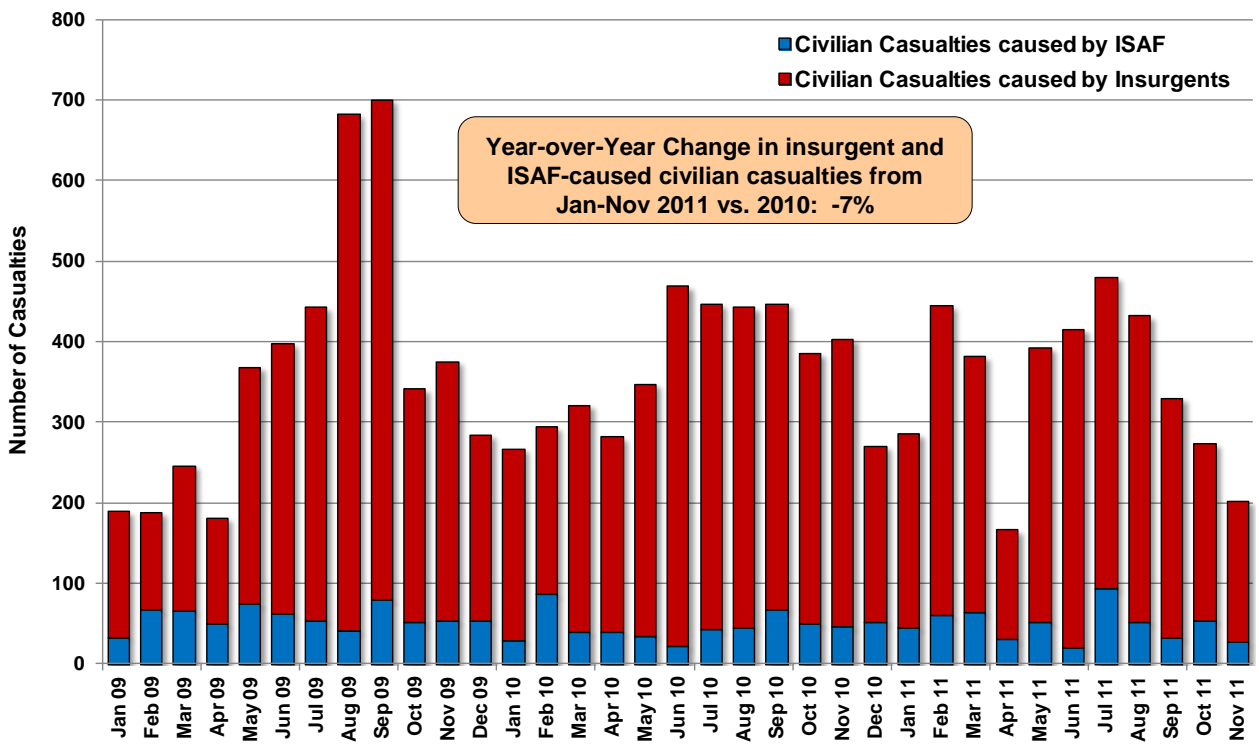
- IED explosions for the period January – November 2011 are 7 percent higher compared to the same period in 2010.
- Insurgents continue to rely on IEDs as the principal means to execute their campaign.
- Over 60 percent of civilian casualties caused by insurgents result from indiscriminate IED explosions.
- More than half of IEDs and mines were found and cleared rather than exploded.

Definition: Executed Improvised Explosive Device (IED) attacks comprise explosive hazard events, to include IED explosions and mine strikes.

Data Source: Afghan Mission Network (AMN) Combined Information Data Network Exchange (CIDNE) Database, as of 16 Dec 2011.



Monthly Civilian Casualties With Assigned Culpability



Year-over-Year Change in insurgent and ISAF-caused civilian casualties from Jan-Nov 2011 vs. 2010: -7%

ISAF Observations

- The number of civilian casualties caused by ISAF and insurgents, from January – November 2011, is approximately 7 percent lower than for the same period last year.
- Insurgents caused over 85 percent of civilian casualties in 2011.
- ISAF-caused total civilian casualties for the period January-November 2011 are approximately 7 percent higher than the comparable 2010 period.
- The number of ISAF-caused civilian deaths decreased by approximately 8 percent when comparing January-November 2011 with the same period last year.
- ISAF continues to make every effort to protect the Afghan population and ensure that the number of civilian casualties is kept to an absolute minimum.

Definition: The figures reported in this chart reflect incidents of conflict-related civilian casualties (deaths and wounded) that have been confirmed through investigation to have been caused by either ISAF or insurgents. The data reported here is consistent with ISAF policy, which directs that all credible allegations of civilian casualties be reviewed.

Data Source: ISAF Civilian Casualties (CIVCAS) Repository, as of 16 Dec 2011.

DISCLAIMER: Figures may change as more information becomes available.